

Total Project Investment:

**\$1,610,000**

Award Amount:

**\$805,000**

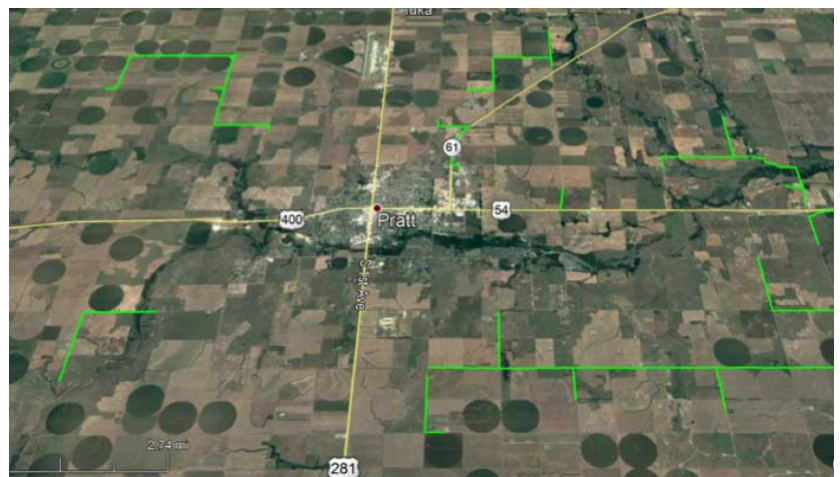
In Partnership With:

**sctelcom**

## ABOUT THE NEED

SCTelcom is constructing 39.5 miles of new fiber to the premise infrastructure in rural, unserved Pratt County. Ninety homes and businesses will be passed by this new plant as well as connect 36 subscribers. SCTelcom proposes to use 100% fiber to the home network facilities, using a state-of-the-art and scalable platform for locations within the proposed coverage area. Because SCTelcom must be prepared to serve all unserved locations within the county and avoid re-investment over passed locations, this project is designed with further extensions in mind.

This project will contribute to the economic and community development in the proposed service area by ensuring Kansans are connected with affordable and reliable broadband. As the COVID-19 pandemic has proven, broadband is necessary for Kansans, regardless of their location and proximity to urban areas, healthcare facilities or educational institutions. SCTelcom's facilities and infrastructure connects rural Kansas residents and businesses and can truly impact their quality of life, ability to learn, work, play or conduct business.



Pratt County

## ABOUT SCTELCOM

SCTelcom, a small rural Kansas broadband company established in 1953, currently provides high-quality broadband Internet services with upload and download speeds up to 1 Gigabit per second to more than 3,000 customers, including residences, businesses, farms and critical community facilities in and near the rural KS communities of Attica, Anthony, Harper, Hazelton, Iuka, Kiowa, Lake City, Medicine Lodge, Pratt, Sharon, Sun City, and Turon. Over the past 20 years, SCTelcom has improved its broadband connectivity to existing unserved and underserved customers typically by constructing fiber to the premise for the most reliable and scalable broadband access network. Additionally, SCTelcom received four Connectivity Emergency Response Grants to help better serve their community and provide connectivity for their rural area.

**The Kansas Office of Broadband Development** was established in 2020 to help ensure that all Kansans have the opportunity to live, work, learn and compete in a global economy by improving universal access to quality, affordable and reliable broadband. The Office is housed within the Community Development Division of the Kansas Department of Commerce. As the state's lead economic development agency, Commerce strives to empower individuals, businesses and communities to achieve prosperity in Kansas.